

Digital Ultrasonic Cleaner

IC-2755

USER MANUAL



Patent No.: 201430566468.8
American Patent No.: 29516663
European Patent No.: 002627075-0001

FEATURES

1 Stainless steel tank

Tank capacity: 800 ml / 0.85 qt;
Tank size: 18.0 x 8.7 x 5.8 cm / 7.1" x 3.4" x 2.3".
Longest item that can fit is 18.0 cm / 7.1"

2 Control panel with capacitive sensing technology

Durable, reliable, resistant to water and harsh chemicals

3 Two wafer transducers

Two wafer transducers $\varnothing 50 \times 3 \text{ mm}$ each for increased cleaning power and uniform ultrasonic energy distribution

4 2-Color LED display

Clear display, easy to read

5 Digital timer with 5 settings

Suitable for various applications

6 Cooling fan

Good heat dissipation, capable for continuous operations

7 Moisture-proofed PCB with industrial IC

Capable for different working environments with better anti-interference performance

8 Detachable power cord and power switch

Convenient to use

INTRODUCTION

Use tap water. Chemical solutions are unnecessary in most cases.

Principles of ultrasonic cleaning:

Millions of tiny air bubbles are generated inside the liquid by high frequency vibration. The air bubbles burst inside the liquid and shake off the debris to achieve the cleaning effect.



- Purified water or distilled water has the same cleaning effect as regular tap water for ultrasonic cleaning. Therefore using tap water is sufficient.
- When cleaning silver or copper items where oxidation has darkened the items, special solutions need to be added to the water to remove the oxidation.

Main Features

- Tank capacity: 800 ml / 0.85 qt. Size: 18.0 x 8.7 x 5.5 cm / 7.1" x 3.4" x 2.3". Longest item that can fit inside the tank is 18.0 cm / 7.1".
- Control panel with capacitive sensing technology. Durable, reliable, resistant to water and harsh chemicals .
- Two wafer transducers Ø 50x3mm for increased cleaning power and uniform distribution
- 2-Color LED display, clearer display, easier to read
- Digital timer with 5 settings, suitable for different applications
- Industrial grade IC, moisture-proofed PCB and cooling fan. Improved product durability.
- Detachable power cord and power switch, convenient to use.

Read the Manual First

The manual should be carefully reviewed before starting to use the device. Warnings should be observed carefully. Please follow the manual for operations.

TABLE OF CONTENTS

Safety Precautions-----	1/2
Items Not Suitable for Ultrasonic Cleaning -----	2
Applications -----	3
Sample Applications -----	4
Product Exploded View-----	5/6
Product Structure and Accessories -----	7
Applications and Timer Settings-----	8
Common Cleaning Methods -----	9
Operation Guidelines -----	10/11
Use of Optional Accessories -----	11
Care and Maintenance -----	12
Specifications -----	13

SAFETY PRECAUTIONS



Keep it away from children!

- Please store the ultrasonic cleaner where it is not reachable by children.
- Danger to children! Danger for death through suffocation! Keep the packaging material away from children.
- This appliance shall not be used by children. Keep the appliance and its cord out of reach of children.



To prevent life-threatening electrical shock, please observe the following:



Danger of electrical shock! Do not use while bathing. Never immerse the device or the power cord in water or other liquid.

- **Danger of electrical shock!** Never touch the power plug with wet hands, especially when inserting or removing the plug.
- **Danger of electrical shock!** If the unit has fallen into water during operation, do not touch the unit. Remove the power plug from the socket first.
- **Danger of electrical shock!** Do not spray water or liquid over the device.
- Never operate the device unattended.
- Follow the manual to operate the device.
- Do not use components unapproved by the manufacturer.
- When removing the power cord from the socket, grab the power plug not the cord.
- To protect the power cord from damage, do not cause it to get caught by things such as a cupboard door or a chair leg; do not drag across a hot surface.
- If there is damage to the power plug, cord, housing, or other parts of the device, do not use the device.
- Do not disassemble the device, except by professionals.
- If the unit is damaged, non-operational or has fallen into water, take it to a qualified service provider.
- Remove the power plug from the socket
 - if malfunction occurs
 - before cleaning the device
 - if the device is not going to be used for prolonged period
 - after each use (recommended)
- The installation of an earth leakage circuit breaker with a rated tripping current of no more than 30 mA provides further protection against an electrical shock. The installation should only be carried out by a trained electrician.



To prevent fire hazards, please observe the following:

- Never block the vents on the device. Keep the vents free from lint, hair and other materials.
- Do not place the device on a soft surface, such as a bed or a couch, where the vents could be blocked.
- Observe the other warnings in the previous section.
- If the supply cord is damaged, it must be replaced by the manufacturer or its service agent or a similarly qualified person in order to avoid a hazard.

SAFETY PRECAUTIONS



Other observations:

- Do not operate the product without filling the tank with water. Running dry will damage the unit.
- Do not plug in the power cord before adding water to the tank. Do not fill the tank above the Max line to avoid overspill.
- Do not use solution containing abrasive substances or strong corrosive chemical solution not recommended by the manufacturer or the supplier.
- Place the device on a dry and flat surface for operation.
- When the device is subjected to severe electromagnetic interference, it may malfunction, stop operating or lose control functions. If this happens, unplug the power cord then reinsert it to restart the device.

IMPORTANT SAFETY INSTRUCTIONS



When using electric appliances, basic precautions should always be followed, including the following :

- Read all the instructions before using the appliance.
- To reduce the risk of injury, close supervision is necessary when an appliance is used near children.
- Only use attachments recommended or sold by the manufacturer.
- Do not use outdoors.
- To disconnect, turn all controls to the off (O) position, then remove plug from outlet. Do not unplug by pulling on cord. To unplug, grasp the plug, not the cord. Unplug from outlet when not in use and before servicing or cleaning.
- To reduce the risk of electrical shock, do not put the appliance in water or other liquid. Do not place or store appliance where it can fall or be pulled into a tub or sink.
- All servicing of this product, including transducer replacement, is to be conducted by qualified service personnel.
- Do not operate any appliance with a damaged cord or plug, or after the appliance malfunctions or is dropped or damaged in any manner.
Return appliance to the nearest authorized service facility for examination, repair, or electrical or mechanical adjustment.



ITEMS NOT SUITABLE FOR ULTRASONIC CLEANING

Soft Jewelry:

Pearls, emerald, ivory, coral, agate, sea turtle shells, etc

These items are not hard, so scratches may occur during cleaning.

Welded, Plated and Glued Items:

Welded or plated metal items, glued items

Ultrasonic cleaning may enlarge the gaps inside the welded joints, plated coating or glued items and may cause separation.

Watches:

Except diver's watches with depth rating over 50 m (150 ft) .

Because the strong penetration capability of the ultrasonic waves, water may get into the watches if they are not truly waterproof. Use the watch stand supplied as a precaution if not sure.

Others:

Wood; coated glass, ceramic, camera filters with preexisting cracks.

Ultrasonic cleaning may enlarge the cracks pre-existed in the coating on the glasses, ceramic, and glass. If the items have no pre-existing cracks, then it is okay.

APPLICATIONS



Optical Stores:

Optical stores can use ultrasonic cleaners to provide valuable services. Use ultrasonic cleaner and tap water to remove the debris on the lenses, hidden in the rims and nose pads so the eye wear gets professional cleaning and care.



Jewelry Stores:

Jewelry stores can use ultrasonic cleaners to expand services. Jewelry such as necklaces, diamond rings, rings, earrings can be cleaned with tap water to recover shine.



Mobile Phone and Electronics Service Shops

PCB renewal: Non-operational electronics, after falling into water, or non-operational key pads can be cleaned with ultrasonic cleaners and pure alcohol to recover the functions.



Watch Service Shops

Precision parts cleaning: Put small parts in a beaker made of stainless steel or glass filled with lubricant oil, then place the beaker inside the cleaning tank and add water. Ultrasonic waves will penetrate the beaker and act on the parts to make them clean.



Printing Shops

Unblocking dried printer heads or ink cartridges:

Large printers and inkjet printers often have dried printer heads or ink cartridges ports. Replacing them with new ones is very costly. Adding acetone or special cleaning solution and using an ultrasonic cleaner with a couple of minutes of cleaning will remove the blockage and make them usable again.

Avoid acetone from contacting the plastic housing to prevent corrosion. Use Indirect Cleaning explained later and a glass or metal container for acetone.




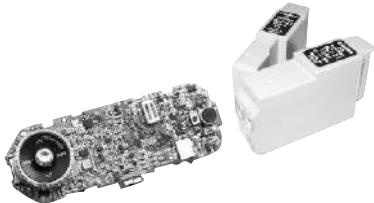




Homes:

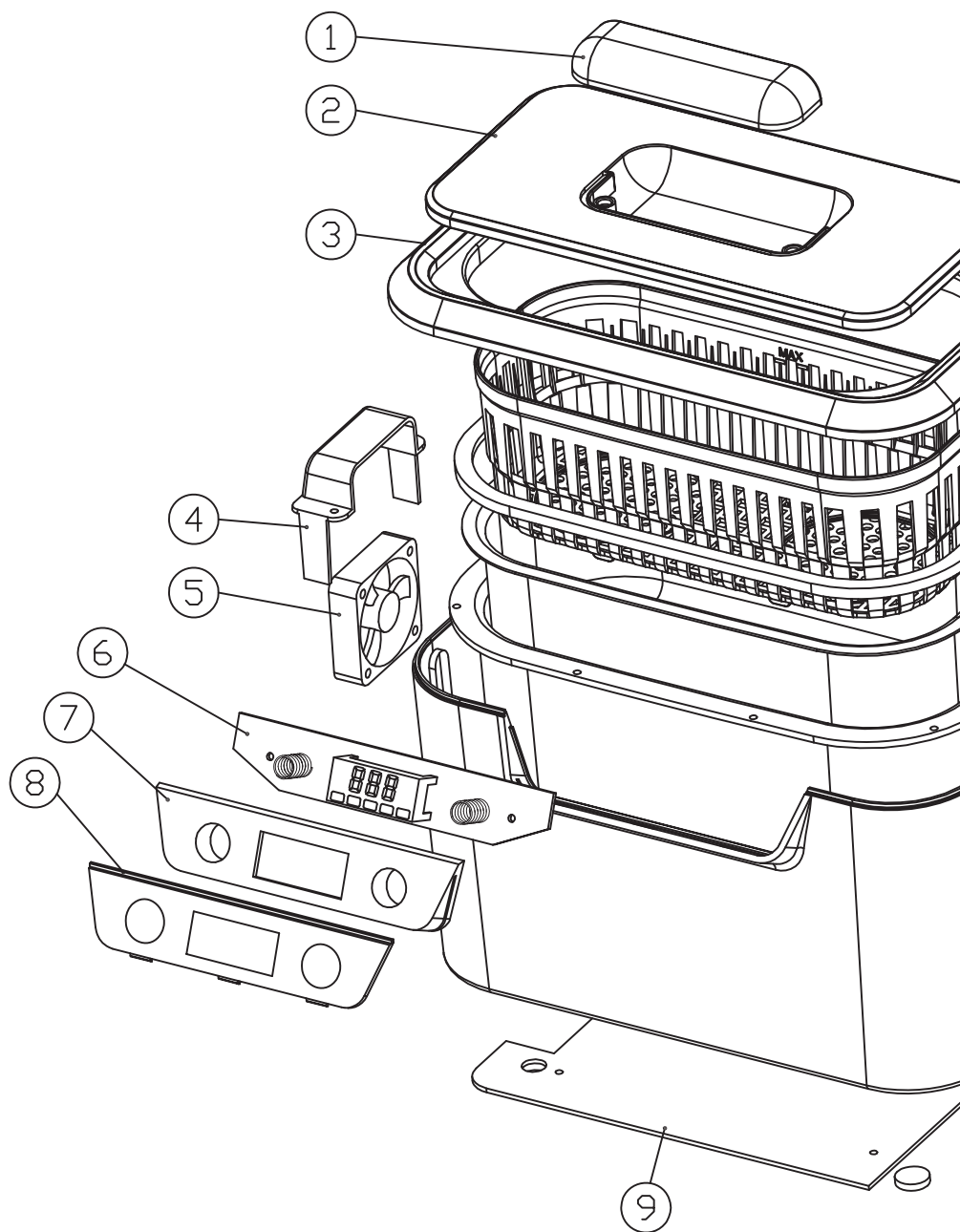
Children and baby items: Debris left in small holes and crevices are difficult to clean by regular means. Bacteria and mold can develop at these locations. Ultrasonic cleaners can remove the debris and be combined with disinfection to achieve true cleaning.

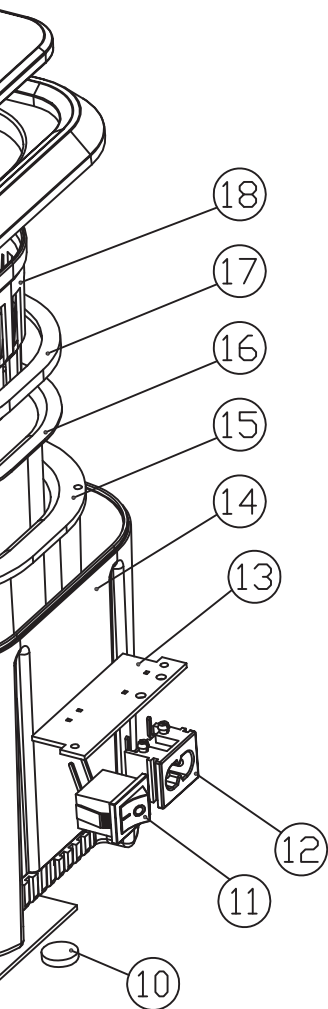
Eyewear, watch bands, shavers, razors and other household items: Ultrasonic cleaners can be used to clean the debris between the rim and the lenses on eyewear, between razor blades, and on the metal mesh of shavers to keep the blades sharp.

SAMPLE APPLICATIONS

Eyeglasses	Jewelry
	
<p>Eyeglasses, sunglasses, etc.</p>	<p>Necklaces, rings, earrings, bracelets, etc.</p>
Precision Parts	PCB, Inkjet Cartridges
	
<p>Precision bearings, gears and watch parts, etc.</p>	<p>PCBs from mobile phones and MP4, ink cartridges, etc.</p>
Personal Items	Children and Baby Item Cosmetic products
	
<p>Watch bands, diver's watches, dentures, braces, shaver heads, etc.</p>	<p>Toys, baby items, cosmetic products, etc.</p>

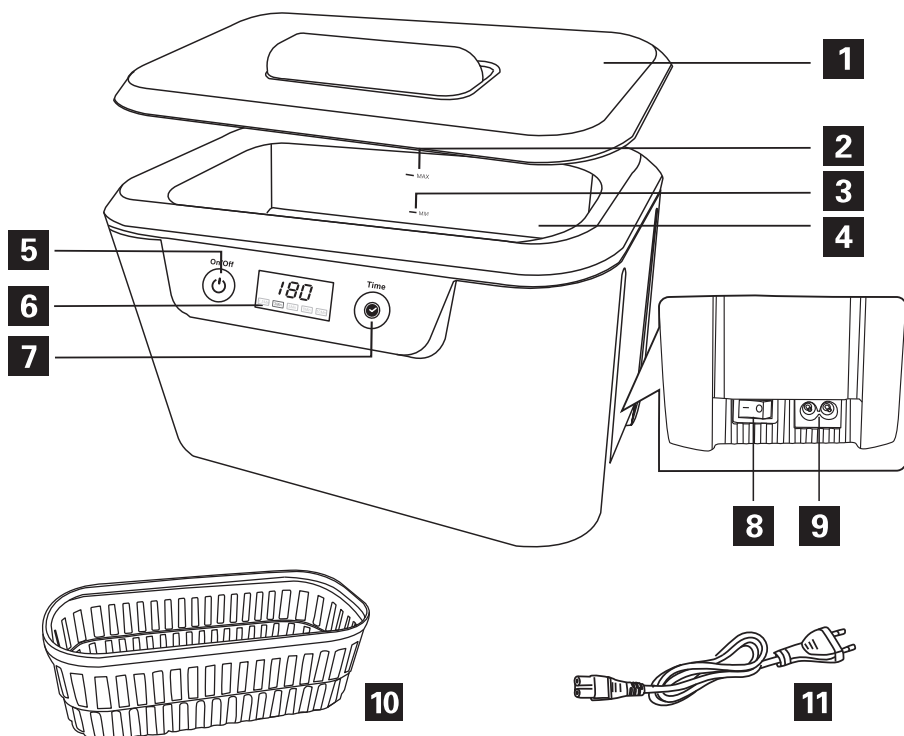
PRODUCT EXPLODED VIEW





CDS-300		
No.	Item	Material
①	Lid handle	ABS
②	Lid-window	AS
③	Top ring	ABS
④	Cooling fan bracket	ABS
⑤	Cooling fan	Standard part
⑥	Control PCB	94V0
⑦	Control panel box	ABS
⑧	Control panel cover	PMMA
⑨	Main PCB	94V0
⑩	Rubber grommets	Silicone rubber
⑪	Power switch	Standard part
⑫	Power socket	Standard part
⑬	Mini power PCB	94V0
⑭	Main housing	ABS
⑮	Inner tank	ABS
⑯	Stainless steel tank	SUS304
⑰	Silicon seal	Silicone rubber
⑱	Plastic basket	ABS

PRODUCT STRUCTURE AND ACCESSORIES



1 VIEWING WINDOW **2** "MAX" MARK **3** "MIN" MARK

4 STAINLESS STEEL TANK **5** ON/OFF BUTTON

6 DIGITAL DISPLAY **7** TIMER BUTTON **8** POWER SWITCH

9 POWER SOCKET **10** PLASTIC BASKET **11** POWER CORD

APPLICATIONS AND TIMER SETTINGS

 <p>180 seconds (3 Minutes):</p> <p>1</p> <p>Default time for normal cleaning.</p>	 <p>300 seconds (5 Minutes):</p> <p>2</p> <p>Recommended for cleaning several items together.</p>	 <p>480 seconds (8 Minutes):</p> <p>3</p> <p>Recommended for greasy items and multiple items.</p>	 <p>090 seconds (1.5 Minutes):</p> <p>4</p> <p>For eyeglasses cleaning.</p>	 <p>600 seconds (10 Minutes):</p> <p>5</p> <p>Recommended for heavily soiled items and multiple items.</p>
---	--	--	--	---



Eyeglasses

eyeglasses, sunglasses, etc.

1 2 3 4 5



Jewellery

Gold, silver, solid metal jewelry such as necklaces, rings, earrings, bracelets, etc.

1 2 3 4 5



Watches

Watch bands, waterproof wristwatches, etc.

1 2 3 4 5



Toiletry Items

Electric toothbrushes, electric shaver heads, razor, dentures, combs, etc.

1 2 3 4 5



Office Equipment

Printer heads, fountain pens, rubber stamps, etc.

1 2 3 4 5



Metal Items

Silverware, bearings, gears, valves, nozzles, small metal parts, coins, metal badges, etc.

1 2 3 4 5

Note: Long time cleaning can cause certain items to loosen up such as screws on eyeglasses.

COMMON CLEANING METHODS

REGULAR CLEANING



Use tap water only

Cleaning Method:

1. Put the items to be cleaned inside the basket and put the basket inside the tank (or put the items inside the tank directly).
2. Add water to the cleaning tank to a level between "MIN" and "MAX" lines and above the area to be cleaned. Select desired time setting by pressing Time button.
3. Press "On/Off" button to start cleaning.

Note: During cleaning, dirt will come off like smoke and the water will become murky over time. When "smoke" stops coming, the cleaning is basically done.

ENHANCED CLEANING

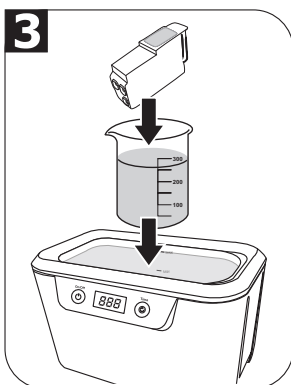


Add appropriate cleaning solutions to water

Cleaning solution can be added to enhance cleaning. Dish detergent can be used in general.

Typical mixing ratio is one part of solution to ten parts of water. Once it's done, run it with water only for another 90 seconds to remove residual cleaning solution.

INDIRECT CLEANING



Put the items in a separate container.

Use ultrasonic waves to penetrate the container to do the cleaning.

Suitable Locations:

watch and precision parts , mobile phone and electronics service shops, large printing shops.

Different industries use different fluids to be used inside the container:

1. Watch service shops - Watch oil (to prevent rust)
2. Precision electrical parts – Hexane (to dissolve grease, to evaporate quickly)
3. Mobile phone and electronic service shops - Pure alcohol (to evaporate quickly)
4. Printing shops – Acetone are often used (to dissolve ink)

Avoid acetone from contacting the plastic housing to prevent corrosion. Use Indirect Cleaning and a glass or metal container for acetone.

Cleaning Method:

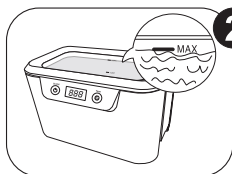
1. Put the item inside a container. Add proper fluid to submerge the area to be cleaned.
2. Place the container in the tank directly. Add water to a level between "MIN" and "MAX".
3. Turn the power switch on. Press "Time" button to set the timer to 10 minutes. Press "On/Off" button to start cleaning. Ultrasonic waves will penetrate the container and clean the items.

OPERATION GUIDELINES

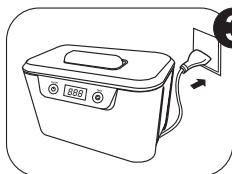


- 1 Remove the lid, place the object to be cleaned inside the basket then in the stainless steel tank.

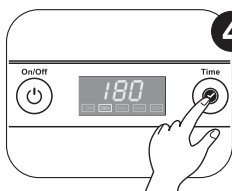
Note: Put small and delicate items with sharp edges into plastic basket for cleaning to avoid scratches. Basket will absorb about 30%~40% of ultrasonic energy hence reduce cleaning effectiveness.



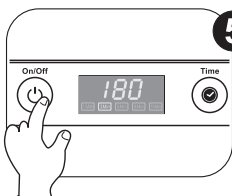
- 2 Fill the tank with tap water.
The liquid must cover the object to be cleaned, but not exceed "MAX" line.



- 3 Put the lid on, plug in the power cord and turn the power switch on.
- 180 appears in the display window.
- This is the default time and is good for normal cleaning.

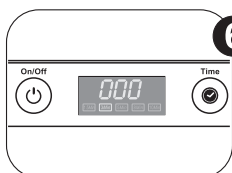


- 4 Select desired time setting by pressing Time button:
→ 180S → 300S → 480S → 90S → 600S →

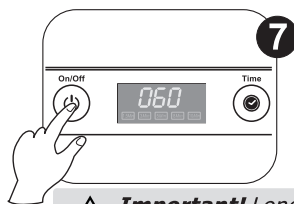


- 5 Press "On/Off" button to start the cleaning process.
The timer starts to count down to zero.

Note: You'll hear buzzing sound which is normal.

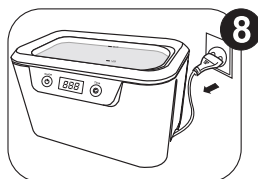


- 6 When the timer counts down to zero, the cleaning process stops automatically and the display shows 000.



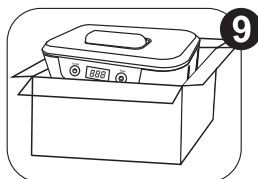
7 If you need to end the process ahead of time, press "On/Off" button. If you need to repeat the cycle or to increase the time, press Time button to select desired time then press "On/Off" button again to restart it.

⚠ Important! Long cycle time will cause heat to build up inside the unit and water temperature to rise. Do not use the unit for more than 30 minutes continuously. Take a 10-minute break in between to prolong the life of the unit.



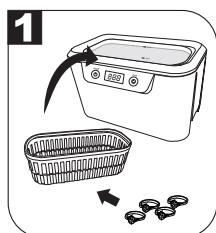
8 When cleaning is done, turn the power switch off, open the cover, remove the items. Unplug the power cord, empty the tank by pouring out the water in the direction shown with an arrow on the unit. Avoid pouring it over the front where the control panel is located. Wipe the tank clean and remove the power plug.

Note: To avoid residue building up, always empty the tank and wipe it clean.



9 Store the unit in a cool and dry place.

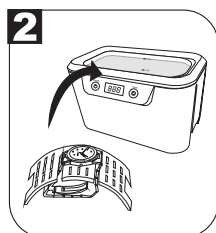
USE OF OPTIONAL ACCESSORIES



BASKET

Use the basket to clean small and delicate items. Ensure items not touching each other if cleaning multiple and delicate items.

Note: Plastic basket absorbs about 30% to 40% of ultrasonic energy hence reduces cleaning effectiveness.

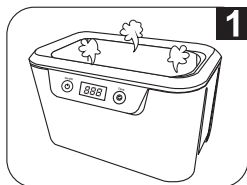


WATCH STAND

Use the watch stand to keep watch body above water while cleaning wristband.

Important: For diver's watch with depth less than 50 m (150 ft), water may get inside if watch body is submerged in the water using an ultrasonic cleaner.

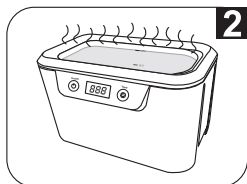
CARE AND MAINTENANCE



1

Do not turn on the unit without water in the tank.

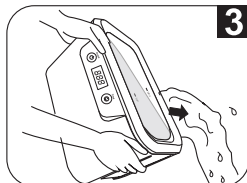
If it is turned on for over 30 seconds without water in the tank, it may damage the unit or severely reduce the life of the unit.



2

Do not run the unit for extended time or continuously.

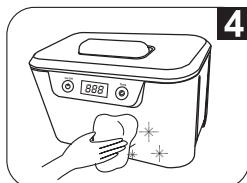
Do not run the unit continuously for over 30 minutes. Stop for about 10 minutes in between to prolong the life of the unit.



3

Do not keep water in the cleaning tank for a long time.

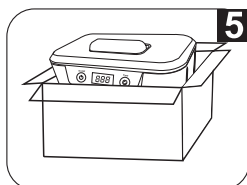
After cleaning is completed, unplug the power cord then pour the water out through the pouring recess. Avoid getting the water inside the housing through the vents and causing damage.



4

Do not spray water over the housing.

Use a towel to wipe the tank and the housing.



5

Do not expose the unit under direct sun shine for long.

Keep the unit in a dry, cool and ventilated area.

SPECIFICATIONS

Description	Digital Ultrasonic Cleaner	
Model	IC-2755	
Tank Capacity	800 ml 0.85 quart (US)	Max.650 ml / 0.68 quart (US)
		Min.200 ml / 0.21 quart (US)
Tank Size	18.0x8.7x5.8 cm / 7.1"x3.4"x2.3"	
Longest Item Fits inside Tank	18.0 cm / 7.1"	
Power Supply	48 W (AC 100 V, 50/60 Hz)	
	55W (AC 100-120 V, 50/60 Hz)	
	60 W (AC 220-240 V, 50/60 Hz)	
Digital Timer Settings	→ 180S → 300S → 480S → 90S → 600S →	
Ultrasonic Frequency	42,000 Hz	
Tank Material	Stainless Steel SUS304	
Housing Material	ABS	
Net Weight	1.27 kg / 2.8 lb	
Gross Weight	1.60 kg / 3.5 lb	
Unit Size	22.0 x13.8 x14.1 cm / 8.7" x 5.4" x 5.6"	
Inner Carton Size	25.5 x 17.0 x 17.0 cm / 10.1" x 6.8" x 6.8"	
Qty per Master Carton	8 pcs	
Master Carton Size	52.5 x 35.5 x 36cm / 20.6" x 13.9" x14.1"	